

AgriPhage®

FIRE BLIGHT BACTERICIDE



LEARN MORE

A safer, long-term solution vs. chemicals to increase yields and eliminate Fire Blight in apples and pears

PRODUCT HIGHLIGHTS

ZERO bacterial resistance - Ever!

ZERO harm to beneficial organisms

ZERO PHI. 4hr REI.

Suppresses and controls Fire Blight in all conditions

Improves Yield

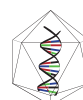
Integrates into existing IPM programs

Can be tank-mixed and rotated with other insecticides and fungicides

Agriphage is the only registered phage bactericide in the US - #1 seller globally



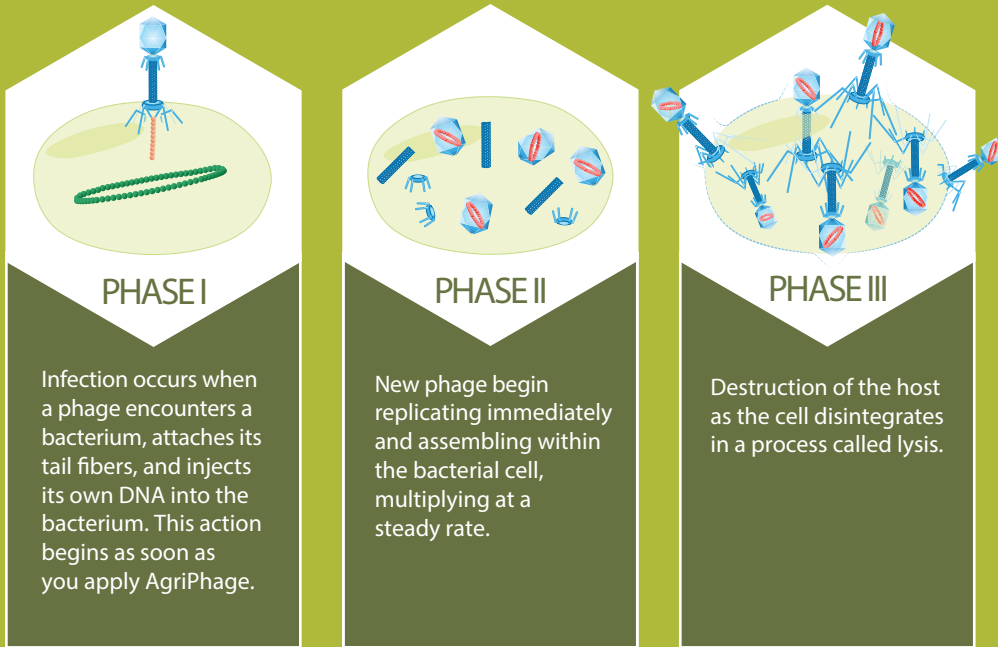
Always carefully read and follow label instructions.



OMNILYTICS™

HOW IT WORKS

Bacteriophages destroy bacteria through a process called "lysis". The infection process begins the moment a phage comes in contact with a bacterium. Bacteriophages infect host bacteria on contact and convert them into tiny virus factories. Within 30 minutes of infection the host cell disintegrates, releasing the phage progeny to infect other host bacteria.



HOW IT PERFORMS

As a result of viral replication, AgriPhage actually increases in concentration due to the fact that the virus remains constant and replicates under favorable environmental conditions to continue its attack on Fire Blight.

AgriPhage can be used in organic orchards under the USDA National Organic Program, but can also be used to enhance performance of conventional tactics in orchards where bacteria has been problematic.

| TANK MIXING | | STORAGE | | TIMING | |
|---|---|--|--|--|--|
| Compatible with most fungicides, insecticides, fertilizers. Do not mix with copper or iron products. (See label compatibility table at www.AgriPhage.com) | | AgriPhage should be stored in areas where the product temperature does not exceed 85 degrees Fahrenheit. | | Preventive to protect growing fruit and leaf tissues or when conditions are conducive for disease infection, and as a curative when the first disease symptoms are visible. Apply as needed. | |
| RATE | RECOMMENDED USES | PHI/REI/PH | USE WITH OTHER TREATMENTS | | |
| 1 to 2 quarts of AgriPhage/ acre/ application | AgriPhage can be used in existing programs where conventional controls have not been effective. | Zero Day PHI 4 Hour REI pH range is 6.0 – 8.5 Above is a tank mix range for pH that must be maintained. | Please allow 24 hours application between AgriPhage and copper-based products. | | |



OMNILYTICS™

1.801.746.3600
www.AgriPhage.com