

INCREASE YOUR CROP YIELD AND  
ELIMINATE HARMFUL BACTERIA

An agricultural bactericide  
featuring bacteriophage technology.



# AgriPhage<sup>®</sup>

## NUT & STONE FRUIT



## PRODUCT HIGHLIGHTS

AgriPhage is a bacteriophage (virus) that attacks BACTERIAL PEACH SPOT and CHERRY CANCKER.

Fights bacterial resistance when integrated into existing IPM programs.

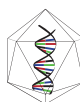
Can be tank-mixed and rotated with other insecticide and fungicide products.

AgriPhage WILL NOT cause damage to fruit or fruiting structures.

Does not cause soil build-up or damage to equipment.



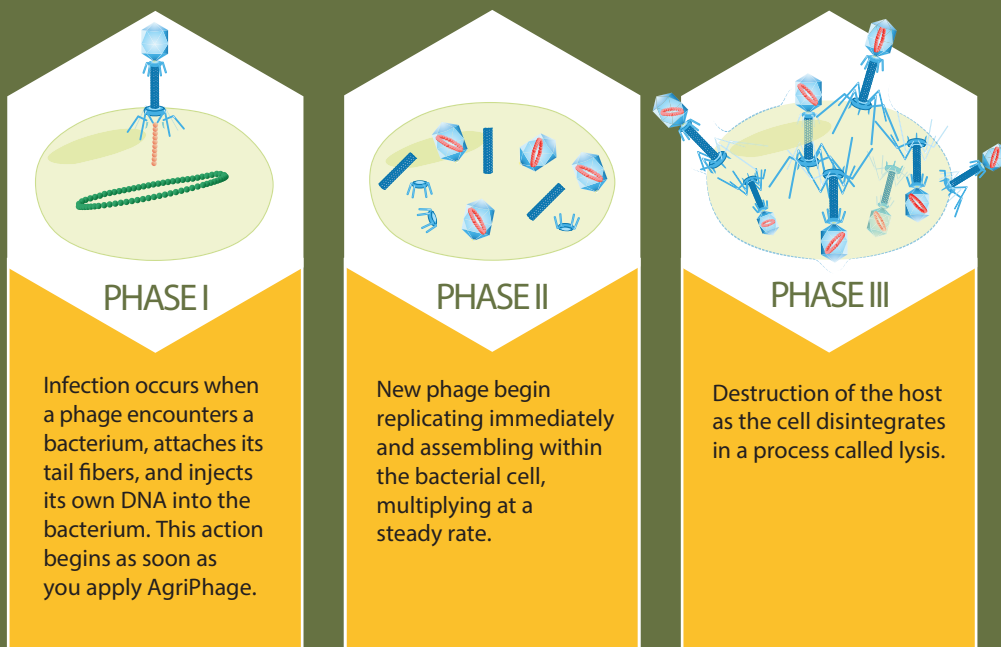
Always carefully read and  
follow label instructions.



**OMNILYTICS<sup>™</sup>**  
THE PHAGE COMPANY

## HOW IT WORKS

Bacteriophages destroy bacteria through a process called "lysis". The infection process begins the moment a phage comes in contact with a bacterium. Bacteriophages infect host bacteria on contact and convert them into tiny virus factories. Within 30 minutes of infection the host cell disintegrates, releasing the phage progeny to infect other host bacteria.



## HOW IT PERFORMS

As a result of viral replication, AgriPhage actually increases in concentration due to the fact that the virus remains constant and replicates under favorable environmental conditions to continue its attack on the Peach Spot bacteria.

AgriPhage can be used in organic groves under the USDA National Organic Program and the WSDA Organic Program, but can also be used to enhance performance of conventional tactics in groves where bacteria has been problematic.

TANK MIXING		STORAGE	TIMING
Compatible with most fungicides, insecticides, fertilizers. Do not mix with copper or iron products. (See label compatibility table at <a href="http://www.AgriPhage.com">www.AgriPhage.com</a> )		AgriPhage should be stored in areas where the product temperature does not exceed 85 degrees Fahrenheit.	Preventive to protect growing fruit and leaf tissues or when conditions are conducive for disease infection, and as a curative when the first disease symptoms are visible. Apply as needed.
RATE	RECOMMENDED USES	PHI/REI/PH	USE WITH OTHER TREATMENTS
1 to 2 quarts of AgriPhage/ acre/ application	AgriPhage can be used in existing programs where conventional controls have not been effective.	Zero Day PHI 4 Hour REI pH range is 6.0 – 8.5  Above is a tank mix range for pH that must be maintained.	Please allow 24 hours application between AgriPhage and copper-based products.



AgriPhage®

NUT & STONE FRUIT

OMNILYTICS™

1.801.746.3600

[www.AgriPhage.com](http://www.AgriPhage.com)